

2012 FSEMC

Ground Transportation Guide

FSEMC

Together "We Set the Standard."



Now that I am in Dallas – How do I get to the FSEMC?

The Airport

Dallas/Fort Worth International Airport is the 4th busiest airport in the world. So expect a busy time once you land. Planning ahead for your departure after the FSEMC is wise, as airline ticketing and the TSA security lines are often lengthy regardless of the time of day.

DFW has 5 terminals, each with their own baggage claim. After retrieving your baggage, head to the ground transportation areas outside of each terminal.

Ground Transportation

From **DFW International Airport** there are several methods of getting to the FSEMC:

- Rental Vehicle – Take the rental car shuttle from the curb
- Chauffeured hired car – Most Expensive and fast
- Independent Taxi – Moderately priced and fast
- Shared Ride Providers – Least expensive option
- Public Transportation – Multiple transfers, slowest option

Private Taxi
Pricing

\$~30 One way trip



Chauffeured Car
Pricing

\$~75 One way trip



Shared Ride Vans (*See note below*)

Pricing

\$34 Round trip adult
\$20 One way trip adult



Costs above are estimates as of January 1, 2012. Vehicles shown are examples only, please read the “terms and conditions” section of your chosen transportation method’s website for more information. ARINC, ARINC Industry Activities, or FSEMC is not responsible for ground transportation, or issues occurring with services shown.

This website can assist you with arrivals: <http://www.dfwairport.com/transport/index.php>

The Hotel

First things first:

- You are going to the Omni Mandalay Hotel at Las Colinas.
 - 221 East Las Colinas Boulevard, Dallas (Irving), Texas 75039
- Check in time is 1500.
- There is free self-parking, or on-site valet for \$14 USD per day with in-out privileges.



Hotel Highlights

- 421 guest rooms and suites
- Relax at Hotel Salon & Spa
- Heated lakeside swimming pool
- High-speed wireless Internet access
- 24 Hour Business Center
- ATM – Currency Exchange
- Dry cleaning and laundry service
- Safe deposit boxes at front desk
- Twice daily housekeeping
- 24 Hour guest room dining



Driving Directions (North Exit)

The Omni Mandalay hotel is about 15 miles from the airport.north exit:

Exit the airport loop road travelling NORTH.

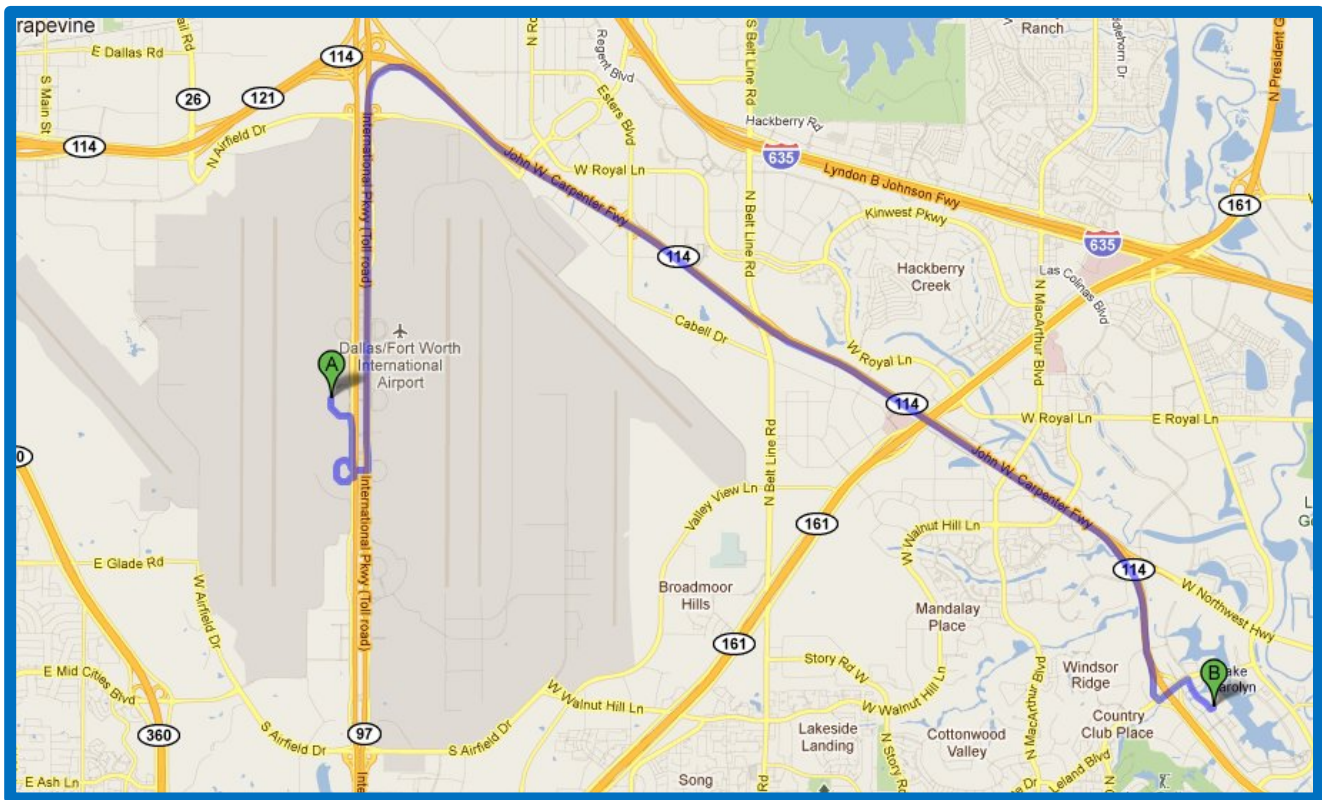
Take the 114 Highway East East (toll road).

Follow 114 East to the O'Connor exit.

Turn left on O'Connor, travel 2 blocks

Make a right turn on Las Colinas Blvd.

The Omni Mandalay hotel will be on the left

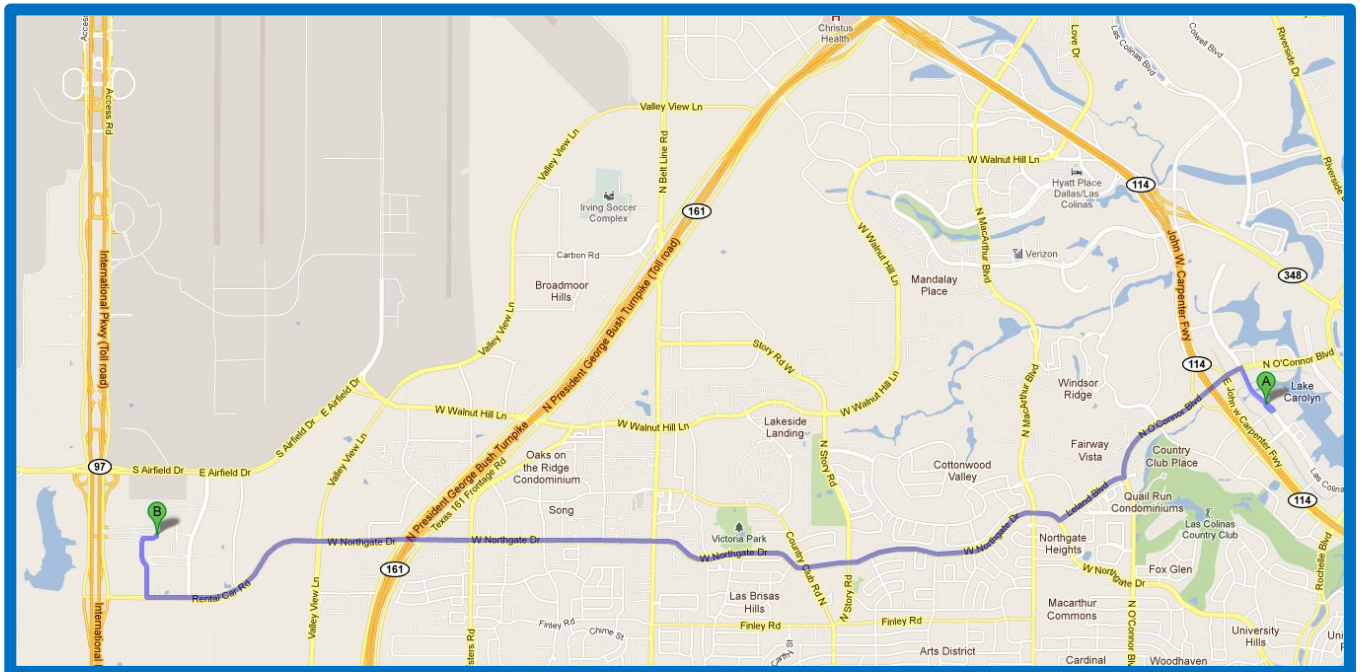


Driving Directions (South Exit from Rental Car Facility)

If you rent a car, here are basic directions from the airport south side (nearest the rental car facility):

- From the rental car facility, take South exit towards Rental Car Road
- Turn left, east on Rental Car Road
- Continue straight on rental Car Road until it becomes Northgate Drive
- Continue on Northgate Drive for appx. 4 miles
- Turn left on Leland Blvd
- Continue on Leland Blvd for appx. 0.5 miles
- Turn left on N. O'Connor Blvd
- Continue on O'Connor Blvd for appx. 0.8 miles
- Turn right onto Las Colinas Blvd

The Omni Mandalay hotel will be on your left.



WEB Information

There is tons of information on the web about Dallas – getting in and out – what to see – just everything you would ever want to know. So test your Google skills and plan a wonderful trip.

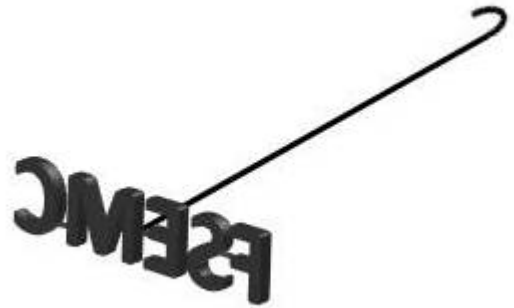
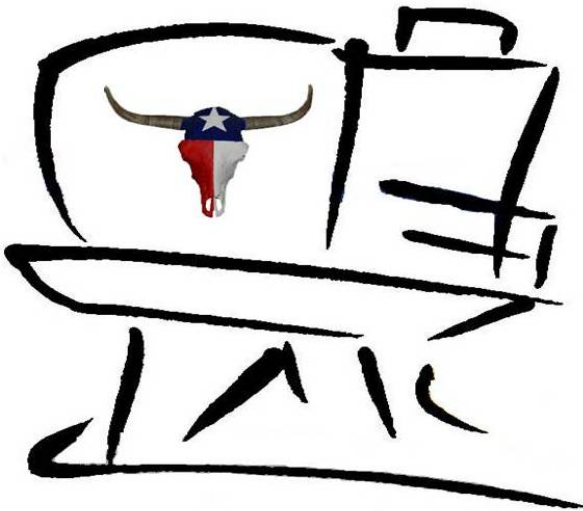
Click on the logos for weblinks:

Dallas/Fort Worth Airport



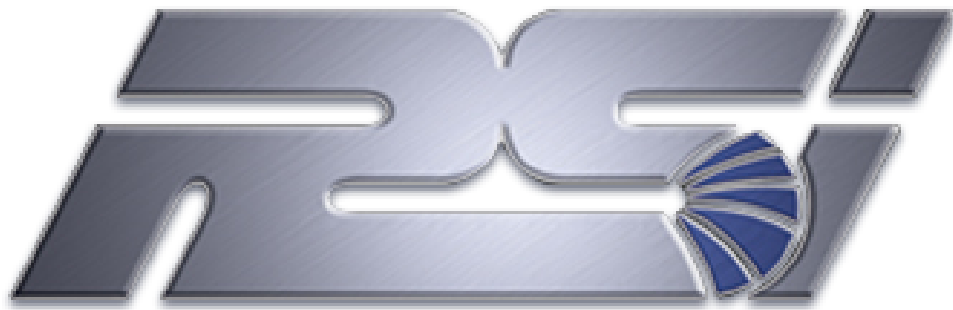
Omni Mandalay Hotel
at Las Colinas:

OMNI  HOTELS
& RESORTS®



FSEMC

Together "We Set the Standard."



VISUAL SYSTEMS